

# Power House Orchestrations Presents

Girl Vocal Group

# Soda Pop

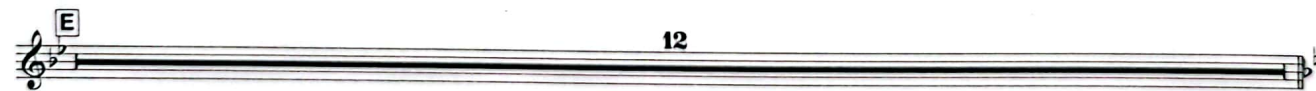
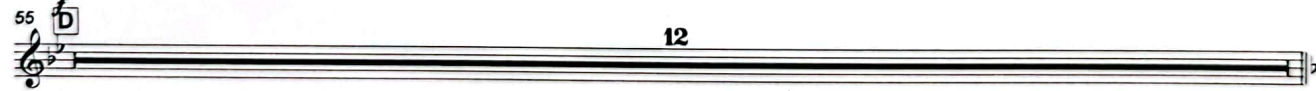
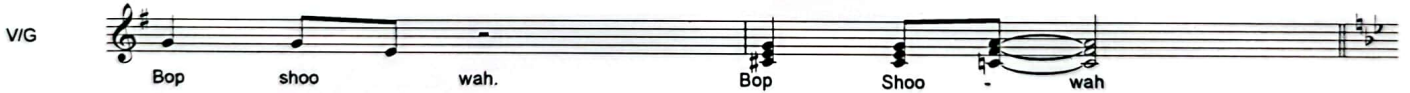
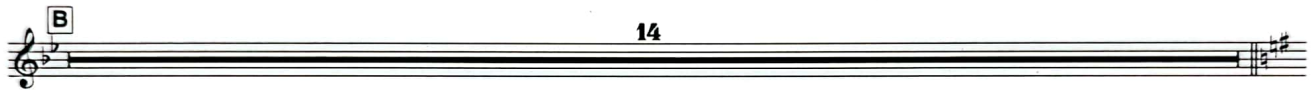
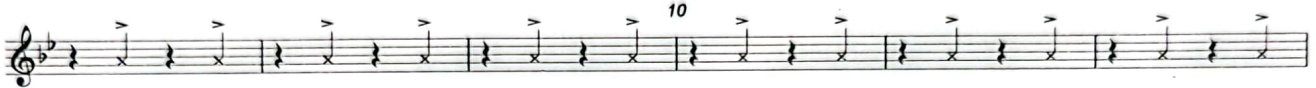
Girl Vocal Group

Words and Music by, Robbie Williams, Kelvin Andrews, Daniel Mould  
Richard Mould and Scott Ralph

As recorded by Robbie Williams and Michael Buble  
Transcribed and adapted by Cy Payne

♩ = 208

Finger click



Copyright 2013, Chrysalis Music Ltd., a BMG Chrysalis Company.  
This arrangement Copyright 2014  
Chrysalis Music Ltd., a BMG Chrysalis Company.

ALL RIGHTS RESERVED. INTERNATIONAL COPYRIGHT SECURED  
Used by permission of ; Music Sales Ltd.  
Power House Orchestrations, 23 Church Road, Brampton, Huntingdon,  
CAMBRIDGESHIRE PE 28, 4 PF  
Tel/Fax 01-480-436695  
www.bigbandsheetmusic.com  
http://www.facebook.com/bigbandsheetmusic

Girl Vocal Group

85

Ooh

90

V/G

Ahh

95

G

Bop Bop Shoo' wah Bop Bop Shoo' wah Bop Bop Shoo wah

100

Bop Bop Shoo' wah Bop Bop Bop shoo wah. Bop Shoo wah

105

H

12

V/G

10

J

12

140

K

Bop Bop Shoo' wah Bop Bop Shoo' wah Bop Bop Shoo wah

145

150

Bop Bop Shoo' wah Bop Bop Bop shoo wah. Bop Shoo wah

L

13

# Power House Orchestrations Presents

Male Vocals

## Soda Pop

Words and Music by, Robbie Williams Kelvin Andrews Daniel Mould  
Richard Mould and Scott Ralph  
As recorded by Robbie Williams and Michael Buble  
Transcribed and adapted by Cy Payne

♩ = 208

Finger click

5  
10  
15  
20  
25  
30  
35  
40  
45  
50  
55  
70  
75

We're the  
love bri gade... sing se- re nades. Fly ing in "G" jets... o- ver  
wood land glades. These are ca na pes not hand\_ gra nades. That's the choicœ made. Go  
U S A... Or Ta- li ban chic. If you got mas sive hands, or  
ti- ny feet. Life hands you le mons, then sells le mon ade. It's the choicewe made.  
So - - I'm gon- na sell So da pop. I wan na sell So da pop.  
I wan na sell So da pop. I wan na sell So da pop. So da!  
Yo - da! Bop shoo wah.  
We  
like the. birds We go Like ly lads. I go on stri ke... We're not  
scab, scab, scabs. The love we lost, when no one stayed. It's the choice we made.

© Copyright 2013, Chrysalis Music Ltd., a BMG Chrysalis Company.  
This arrangement © Copyright 2014.  
Chrysalis Music Ltd., a BMG Chrysalis Company.

ALL RIGHTS RESERVED. INTERNATIONAL COPYRIGHT SECURED  
Used by permission of: Music Sales Ltd.  
Power House Orchestrations 23 Church Road, Brampton, Huntingdon,  
CAMBRIDGESHIRE PE 28 4 PF  
Tel/Fax 01480 436695  
www.bigbandsheetmusic.com  
http://www.facebook.com/bigbandsheetmusic

Male Vocals

80 **F** They wan na know, a about thes we wear. If weswing both ways, 85 but who stays there? As long as we get paid,

90 we don't care Thechoice is theirs. So - I'm gon na sell So da pop. I wan na **G**

95 sell So da pop. I wan na sell So da pop. I wan na sell So da pop. I wan na So da!

105 **H** Yo da! Bop shoo wah. Come en joy the mad ness.

110 How you dance through the fire is all that mat ters now. How

115 can you re sist us? we are the busi ness so. "Scat" solo vocal

120

125

**J** 11 I'm gon - na

**K** 140 sell So da pop. I wan na sell So da pop. I gon na sell So da pop. I wan na

145 sell So da pop. So da! Yo da! Bop shoo wah. 150

**L** Come en - joy the mad ness. 155 How you dance through the fire

160 is all that mat ters now. How can you re sist us? we are the busi ness

Sol Sol Sol Sol

# Power House Orchestrations Presents

Piano

# Soda Pop

Words and Music by, Robbie Williams, Kelvin Andrews, Daniel Mould

Richard Mould and Scott Ralph

As recorded by Robbie Williams and Michael Buble

Transcribed and adapted by Cy Payne

♩ = 208

Finger click ( Drum Solo)

9

We're the

17 **A**

love bri gade... sing se renades... Fly ing in "G" jets... o ver...

*mf*

23

wood land glades... These are ca na pes not hand gra nades. That's the choice we made... Go

29 **B**

U S A... Or Ta li ban chic. If you got mas sive hands, or

© Copyright 2013, Chrysalis Music Ltd., a BMG Chrysalis Company.  
This arrangement © Copyright 2014.  
Chrysalis Music Ltd., a BMG Chrysalis Company.

ALL RIGHTS RESERVED. INTERNATIONAL COPYRIGHT SECURED  
Used by permission of ; Music Sales Ltd.  
Power House Orchestrations, 23 Church Road, Brampton, Huntingdon,  
CAMBRIDGESHIRE PE 28, 4 PF  
Tel/Fax 01-480-436695  
www.bigbandsheetmusic.com  
http://www.facebook.com/bigbandsheetmusic

35

ti-ny feet. Life hands you le mons, then sells le mon ade. It's the choice we made.

Gm Cm A7 D7

41

So I'm gon-na sell So da pop. I wan na sell So da pop.

gliss. f

G G#m G G#m G

46

I wan na sell So da pop. I wan na sell So-da pop.

G C C G

50

So da! Yo da! Bop shoo wah.

G A7 D7 G A7 D7

55

Trumpet solo ad-lib

Gm Eb7 Gm Eb7 Gm Eb7 Gm Eb7 Eb7

60

Chords: Eb7, C, Eb, Gm, Eb, C, Eb7, D7

65

We like the birds We go Like ly lads.

Drum solo + growling Brass

70

I go on stri ke... We're not scab, scab, scabs. The

75

love we lost, when no one stayed. It's the choice we made. They

Chords: Cm, A7, D7, D7

79

wan na know, a bout the clothes we wear. If we swing both ways, but who stays there?

Chords: Gm, Gm, Gm, Gm, Cm, Cm, Gm

v.s.

86

As long as we get paid, we don't care. The choice is theirs. So I'm gon na

Gm Cm A7 D7 D7

*ff*

93

sell So da pop. Iwan nasell So da pop. Iwan nasell So da pop. Iwan na

G G G G C C

99

sell So da pop. Iwan na So da! Yo da! Bop shoo wah.

G G A7 D7 G C# D7

105

Come enjoy the mad ness. How you

"Wild" ad-lib "fill-ins"

Gm Gm Gm Gm

109

dance through the fire is that mat ters now. How can you re sist us?

Eb6 Eb6 Gm6 Gm#5 Gm Gm#5 Gm6 Eb



114

I

"Scat" solo vocal

we are the busi ness so.

119

124

J

Trumpet solo

130

K

135

I'm gon na sell So da pop.

I wan na

141

sell So da pop. I gon na sell So da pop. I wan na

G C

145

sell So da pop. So da! Yo da! Bop shoo wah.

G A<sup>7</sup> D<sup>7</sup> G C# D<sup>7</sup>

151

Come en joy the mad ness. How you dance through the fire is all that mat ters

"Wild" ad-lib fills

Gm Gm Gm Gm Eb<sup>6</sup> Eb<sup>6</sup>

157

now. How can you re sist us? we are the busi ness Sol Sol Sol Sol

Gm<sup>6</sup> Gm<sup>#5</sup> Gm Gm<sup>#6</sup> Eb<sup>maj7</sup> D<sup>7</sup> Gm Gm